

STATE OF ARKANSAS
STATE HIGHWAY DEPARTMENT

FISCAL YEAR	Job No.	SHEET No.	TOTAL SHEETS
1928	878	1	17

Prep. Bas. Cont. N. No. Van B. Co. D. 1376

PLAN OF PROPOSED BRIDGES
ON
CLINTON-NORTH ROAD
VAN BUREN COUNTY

ROUTE 65 SEC. 7A & 7B
JOB No 878
FEDERAL AID PROJECT No.

INDEX OF SHEETS

Sheet No.	Dwg. No.	Title
1	1376	Title Sheet
2	1377	Layout Sheet No. 999
3	1378	Details of Structure-Br. No. 999
4	1379	Details of Abutments-Br. No. 999
5	1380	Details of Piers-Br. No. 999
6	1381	Layout of Bridge Archway Forth-Br. No. 1000
7	1382	Details of Abutments-Br. No. 1000
8	1383	Details of Pier and Bents-Br. No. 1000
9	1003	Details of 35' W.C.D. Girder Spans
10	1083	Details of 12' High Truss Span
11	1384	Layout of Bridge No. 1001
12	1385	Details of Abutments-Br. No. 1001
13	1386	Details of Abutments & Int. Bent-Br. No. 1001
14	1021	Details of 5' W.R.C.D. Girder-Stew 60' Lt.
15	F530A	Typical Cross-section-30' Rd'y.
16-17		Cross-Section Details

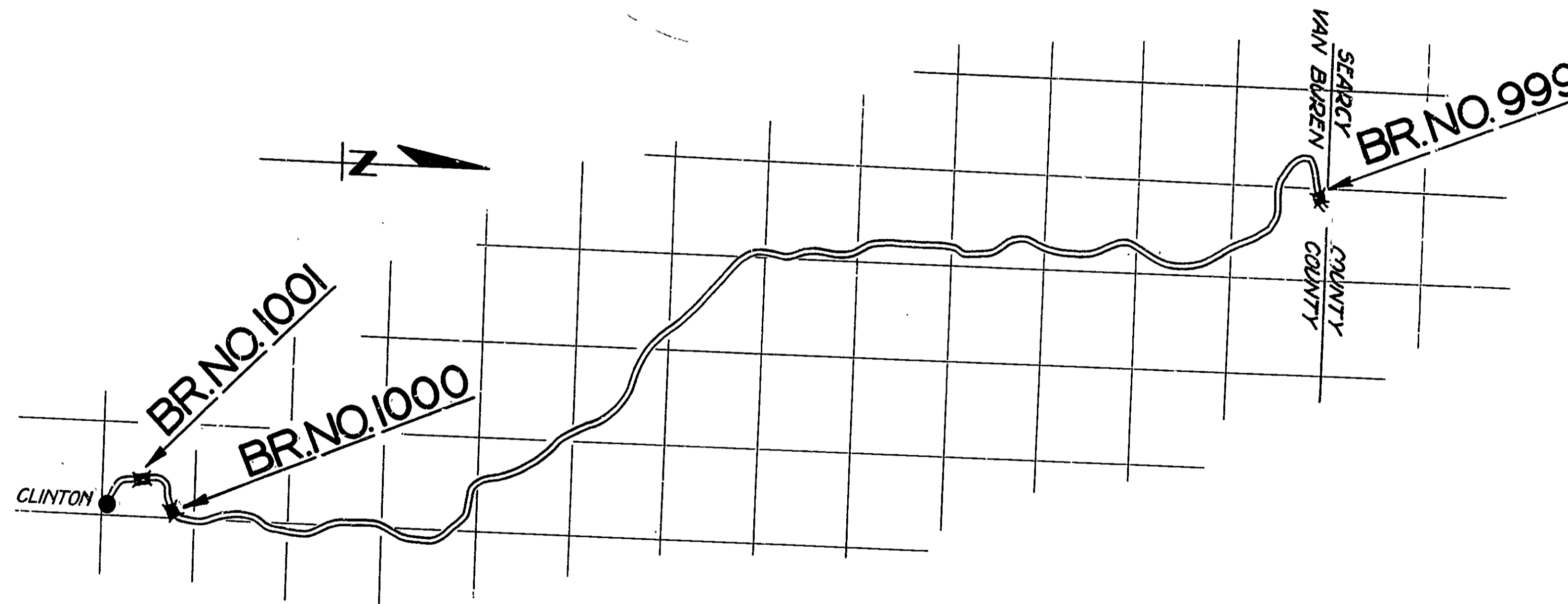
QUANTITIES

Item No.	Description	Quantity
12	Solid Rock Excavation	675 Cu. Yds
12	Loose Rock Excavation	360 " "
12	Earth Excavation	1484 " "
13	Dry Excavation for Structures	453 " "
13	Wet Excavation for Structures	824 " "
13	Solid Rock Excav. for Structs	109 " "
17	Borrow	3212 " "
54	Class "A" Concrete	633.1 " "
54	Class "5" Concrete	499.3 " "
55	Reinforcing Steel	197,041 Lbs
56	Structural Steel (Trusses)	109,765 " "
69	Rip Rap	767 Cu. Yds
74	Concrete Railing for Structs.	821 Lin. Ft.

Specifications approved by Bureau of Public Roads, September 28, 1925, and adopted by State Highway Commission May 30, 1925, with amendments and Special Provisions as follows:

SPECIAL PROVISIONS

Revisions to Paragraph 1103 / Sheets



LAYOUT

Scale:

GROSS LENGTH OF PROJECT = 949' 6 1/2"
NET LENGTH OF PROJECT = 949' 6 1/2"

APPROVED
COMMISSIONER - STATE LANDS, HIGHWAYS AND IMPROVEMENTS
APPROVED
STATE HIGHWAY ENGINEER
RECOMMENDED FOR APPROVAL
DISTRICT ENGINEER - U. S. BUREAU OF PUBLIC ROADS
RECOMMENDED FOR APPROVAL
CHIEF ENGINEER - U. S. BUREAU OF PUBLIC ROADS
APPROVED
DIRECTOR - U. S. BUREAU OF PUBLIC ROADS

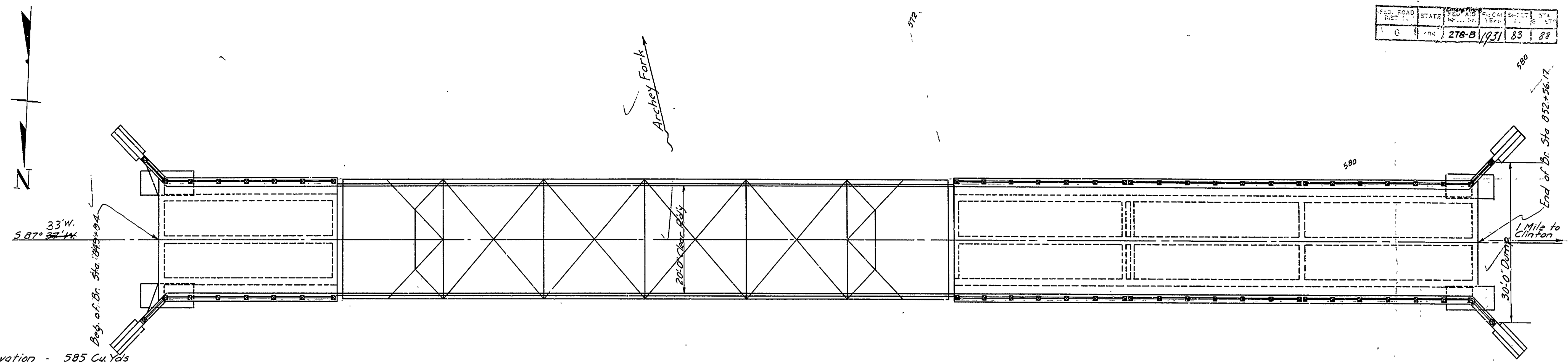
M. B. Weaver
BRIDGE ENGINEER

KEY TO ARCHY FORK CR. VAN BUREN DIST. 427

FISCAL YEAR	Job No.	SHEET NO.	TOTAL SHEETS
1928	878	6	17

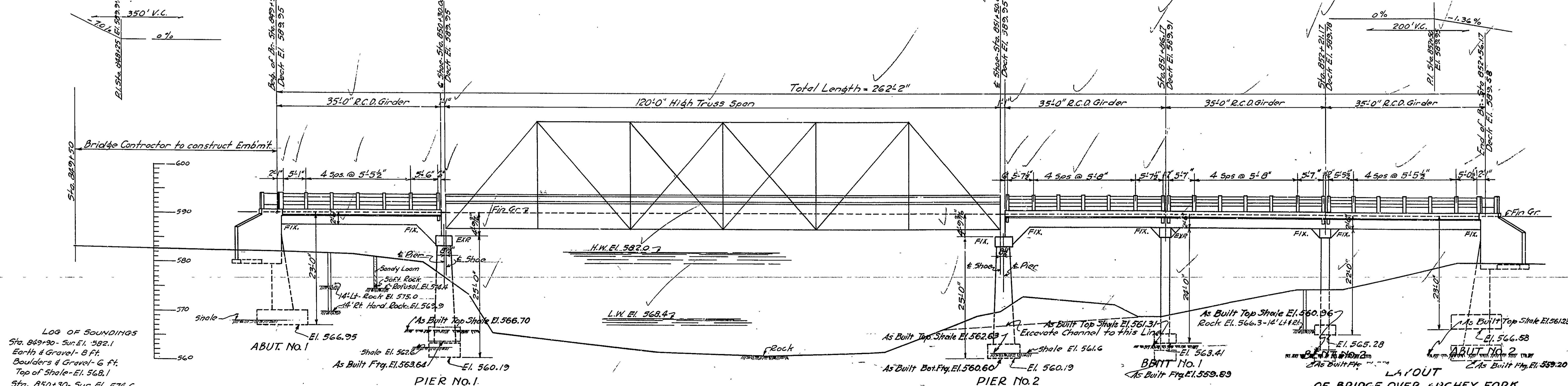
FED. ROAD DIST.	STATE	PROJECT NO.	SHEET NO.	TOTAL SHEETS
1	ARK.	278-B	83	88

582 580 570 576 572 570 568 566 564 562 562 564 566 568 570 570 568 568 572 574 576 576 577 578 579



- QUANTITIES**
- Item No. 12 Earth Excavation - 585 Cu. Yds
 - " " 13 Dry Excav. for Structs.-407 " "
 - " " 13 Wet Excav. for Structs.-210 " "
 - " " 13 Solid Rock Exc. for Structs.-31 " "
 - " " 17" Borrow - 596 Cu. Yds
 - " " 54 Class "A" Concrete - 228.1 " "
 - " " 54 Class "S" Concrete - 198.6 " "
 - " " 55 Reinforcing Steel - 69,356 Lbs
 - " " 56 Structural Steel (truss)-115,680 Lbs
 - " " 74 Conc. Railing for Structs- 299 Lin. Ft.

PLAN
BRIDGE NO. 1000



ELEVATION

LOG OF SOUNDINGS

Sta. 849+30 - Sur. El. 582.1
 Earth & Gravel - 8 Ft.
 Boulders & Gravel - 6 Ft.
 Top of Shale - El. 568.1

Sta. 850+30 - Sur. El. 574.6
 Gravel & Boulders - 12 Ft.
 Top of Shale - El. 562.6

Sta. 851+50 - Sur. El. 572.6
 Sand - 11 Ft.
 Top of Shale - El. 561.6

Sta. 852+17-14' Lt. - Sur. El. 577.0
 Sandy Loam - 8.7 Ft.
 Yellow Clay & Soft Rock - 2 Ft.
 Hard Rock - El. 566.3

Sta. 852+17 Rt. - Sur. El. 577.0
 Sandy Loam - 9.8 Ft.
 Hard Rock - El. 566.3

For Details of 35' R.C.D. Girder Spans, See Dwg. No. 1003
 For Details of 120' High Truss Span, See Dwg. No. 1083
 For Details of Abutments, See Dwg. No. 1382
 For Details of Piers and Bents, See Dwg. No. 1383

DRAINAGE AREA
 125 Sq. Mi. (from U.S.G.S. Map) - Mts.
 B.M. #55 El. 580.24
 on 6" W. Oak - 75' Lt. Sta. 852+00

Revised Fig. 86, Rock Fills, Excav. Quantities by R.E.L. 5-18-32

LAYOUT OF BRIDGE OVER ARCHY FORK MARSHALL-CLINTON ROAD VAN BUREN CO. ROUTE 65. SEC. 7

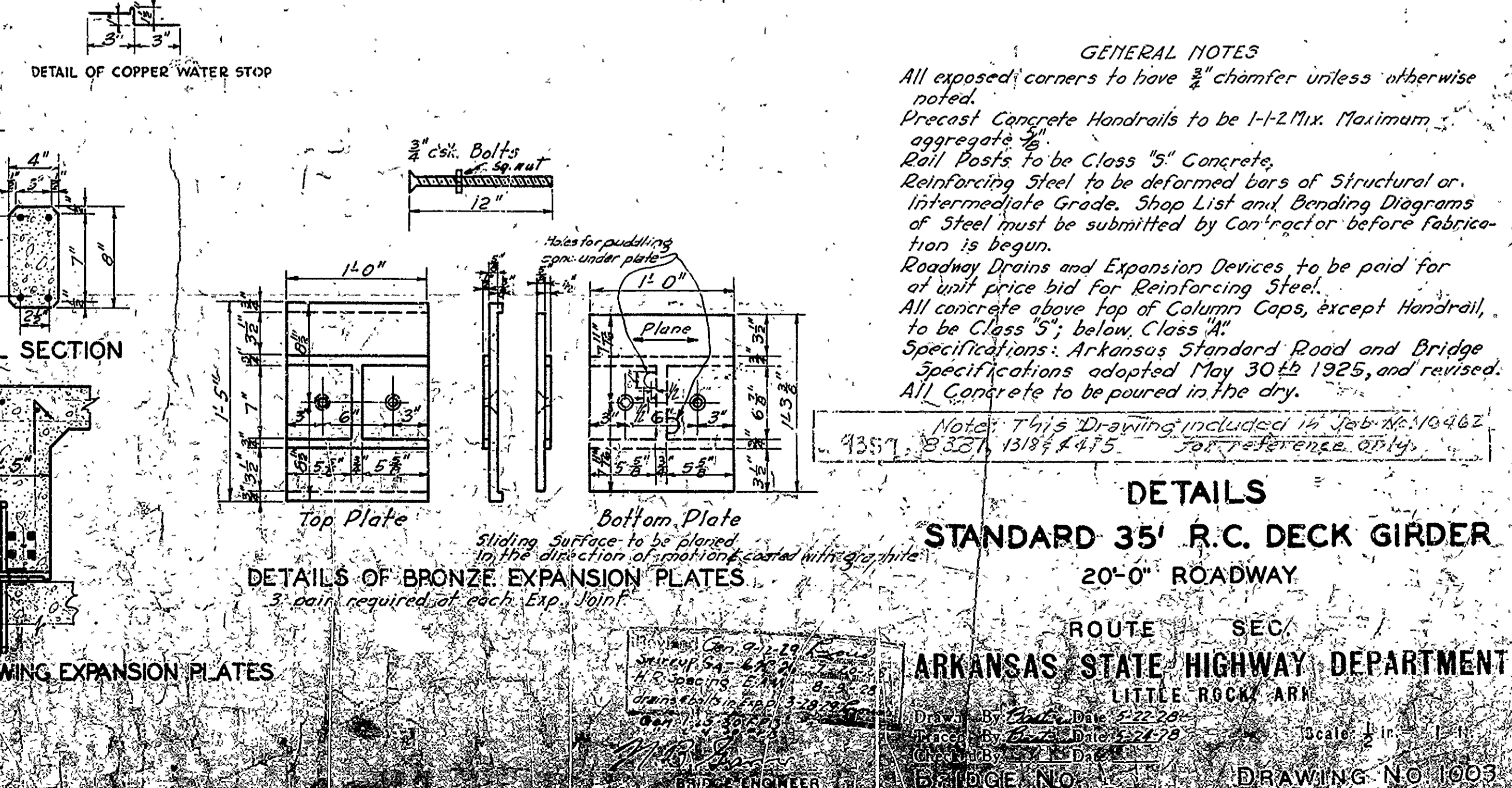
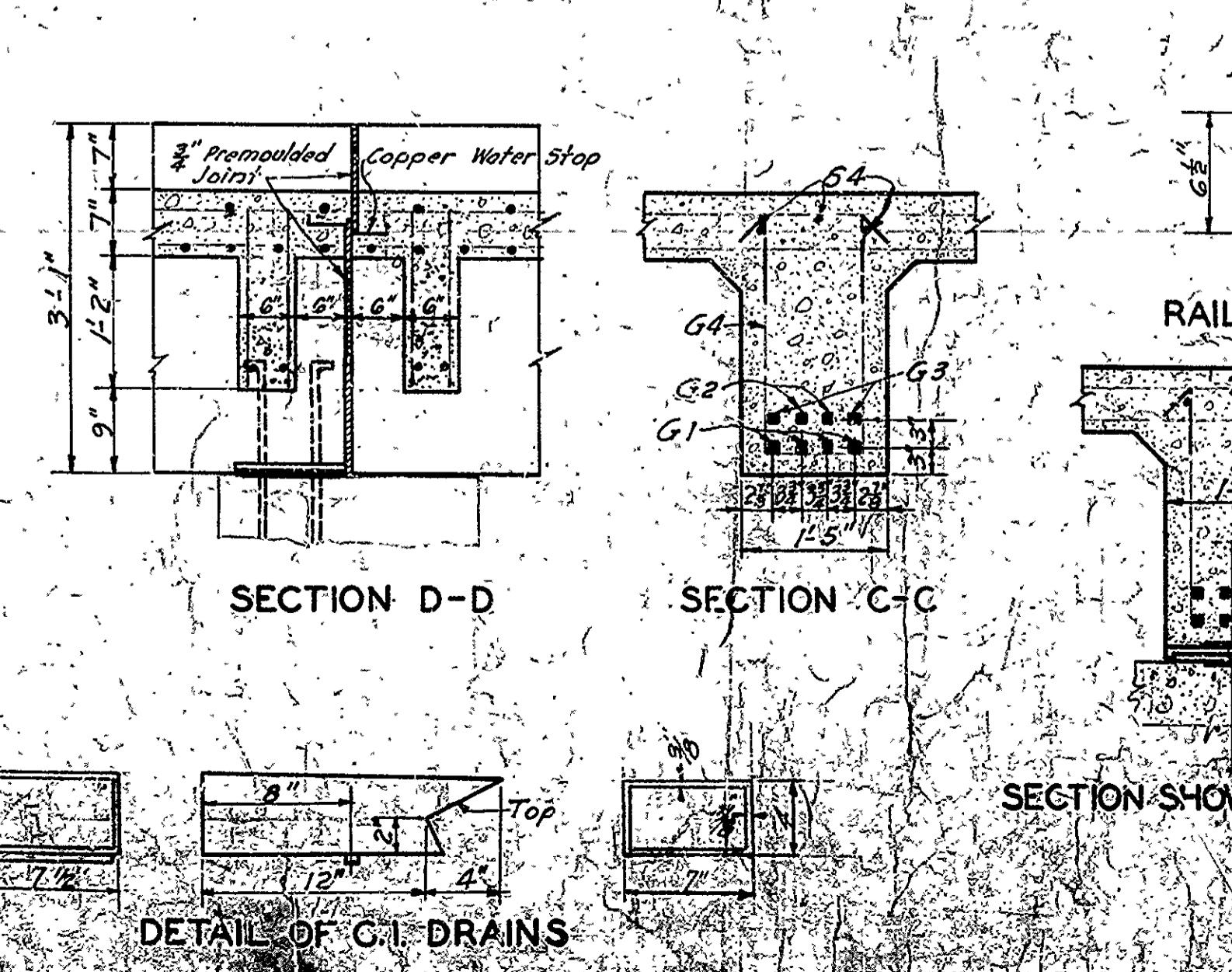
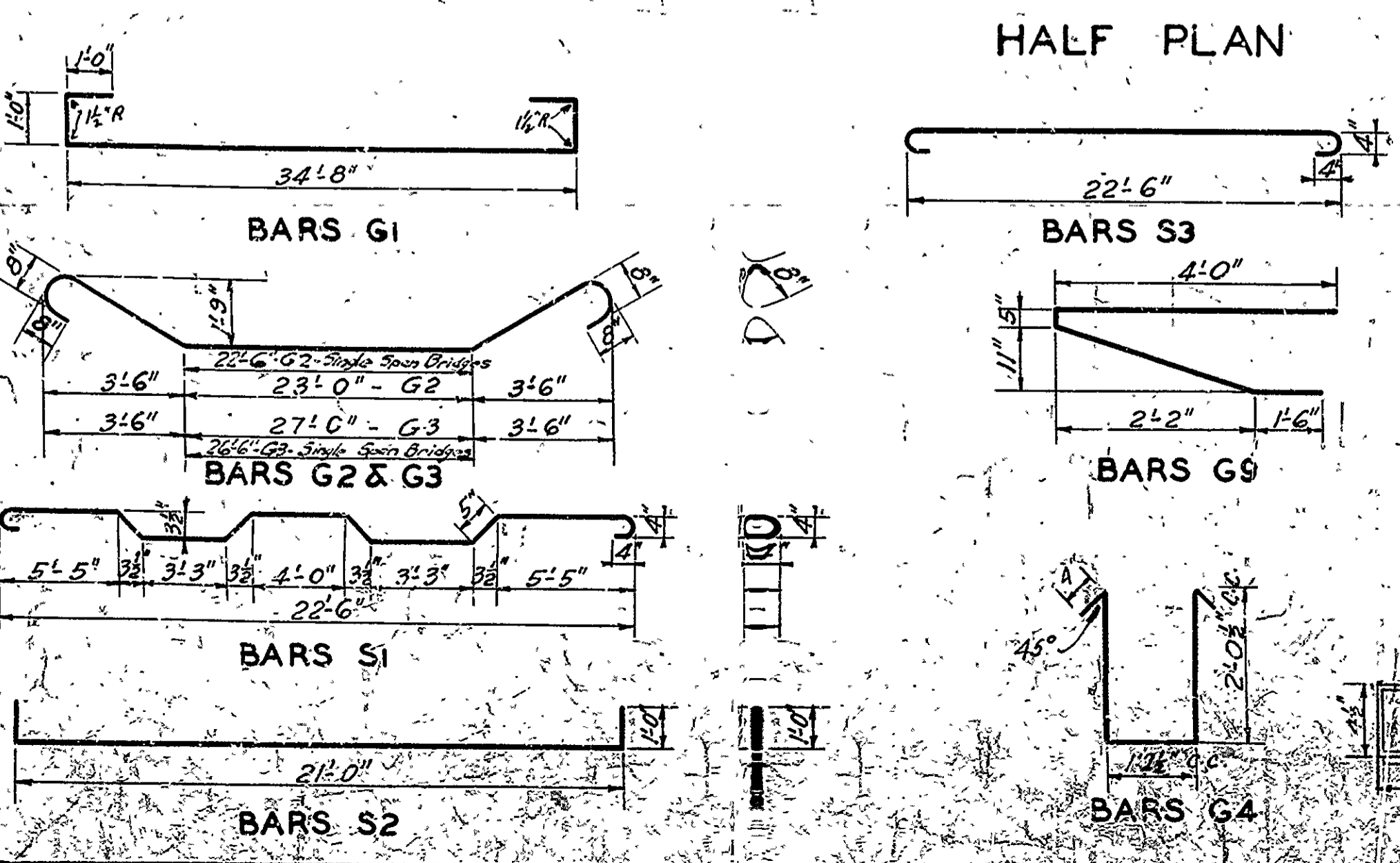
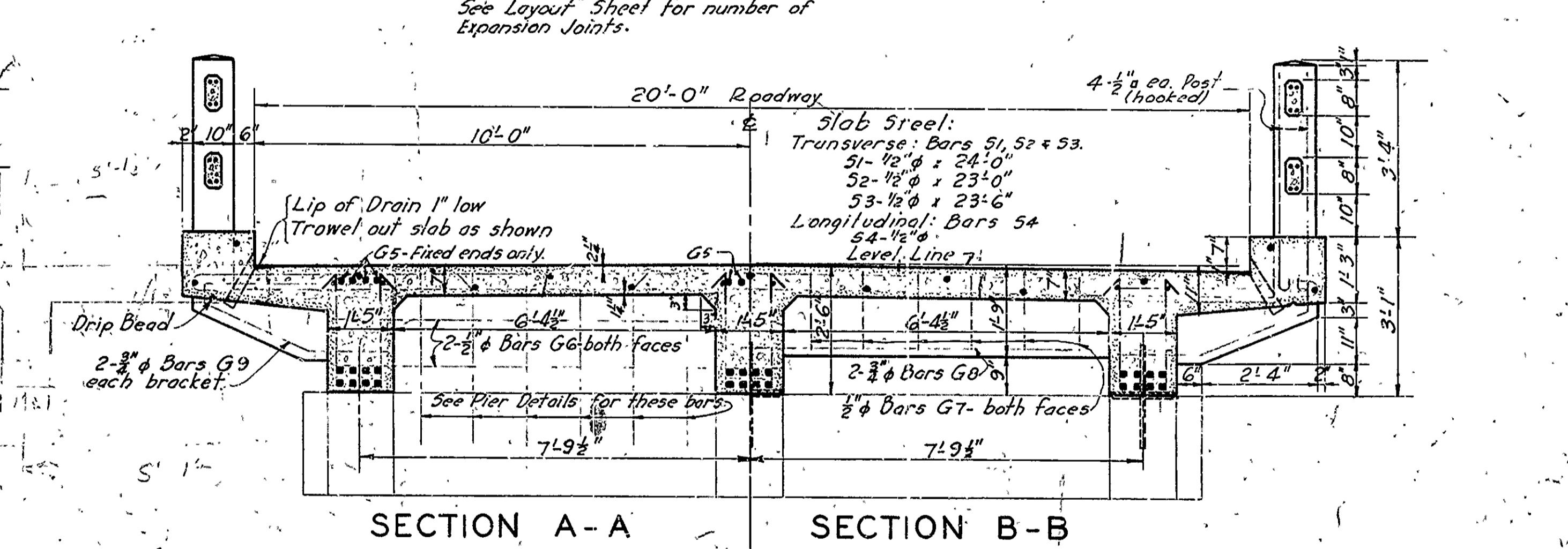
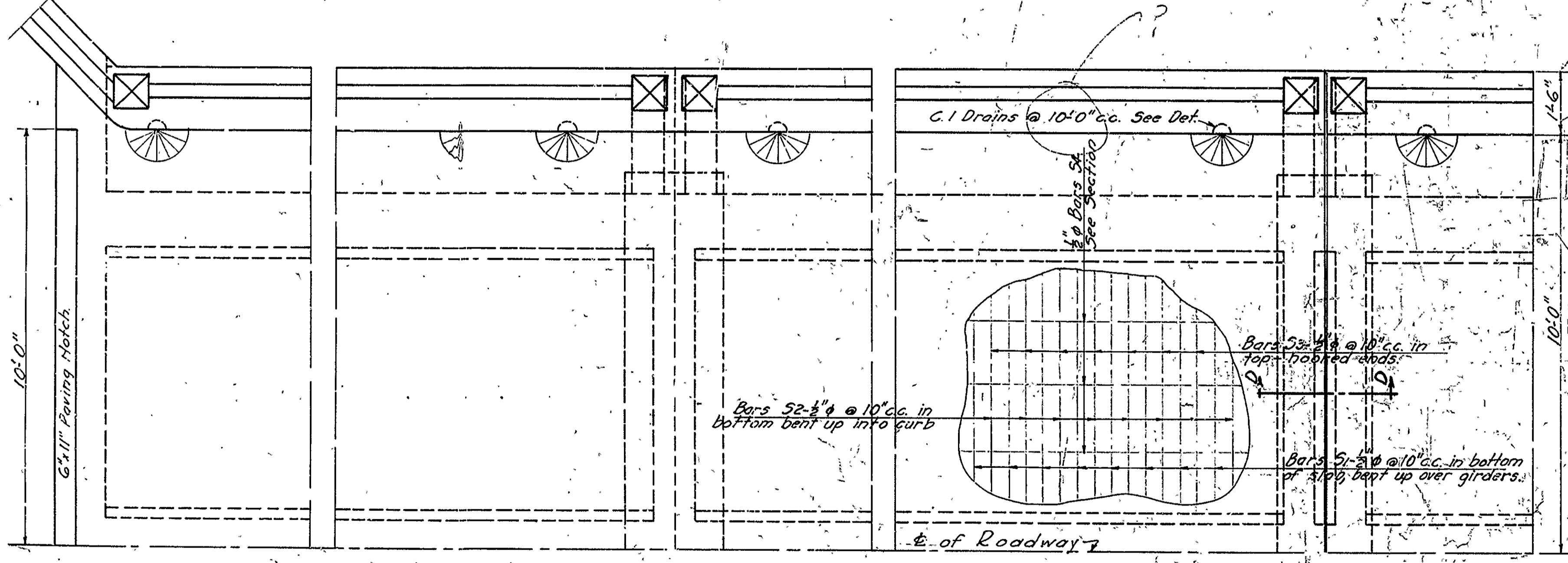
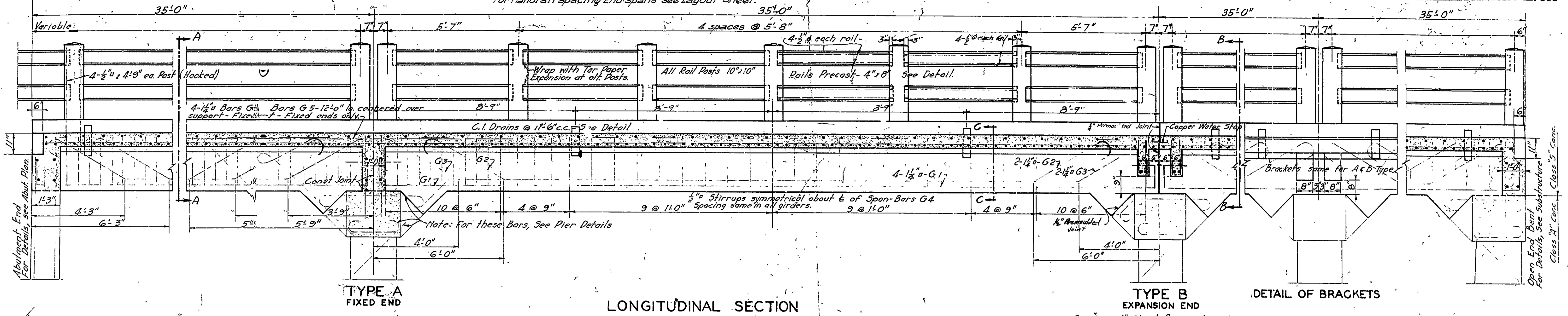
ARKANSAS STATE HIGHWAY DEPARTMENT
 LITTLE ROCK, ARK.

Drawn By: *JB* Date: 1-25-27
 Traced By: *JB* Date: 2-2-27
 Checked By: *W.P.C.* Date: 3/20/29
BRIDGE NO. 1000 **DRAWING NO. 1381**

M.A. Jones
 BRIDGE ENGINEER

Sheet No.	5	Project No.	1005	Scale	AS SHOWN	Year	1925	Sheet No.	5	Total Sheets	10
-----------	---	-------------	------	-------	----------	------	------	-----------	---	--------------	----

Handrail spacing as shown below for all int. spans.
For Handrail spacing End spans see Layout Sheet.



GENERAL NOTES
All exposed corners to have 3/4" chamfer unless otherwise noted.
Precast Concrete Handrails to be 1-1-2 Mix. Maximum aggregate 1/2".
Rail Posts to be Class "5" Concrete.
Reinforcing Steel to be deformed bars of Structural or Intermediate Grade. Shop List and Bending Diagrams of Steel must be submitted by Contractor before fabrication is begun.
Roadway Drains and Expansion Devices to be paid for at unit price bid for Reinforcing Steel.
All concrete above top of Column Caps, except Handrail, to be Class "5", below, Class "A".
Specifications: Arkansas Standard Road and Bridge Specifications adopted May 30th 1925, and revised.
All Concrete to be poured in the dry.

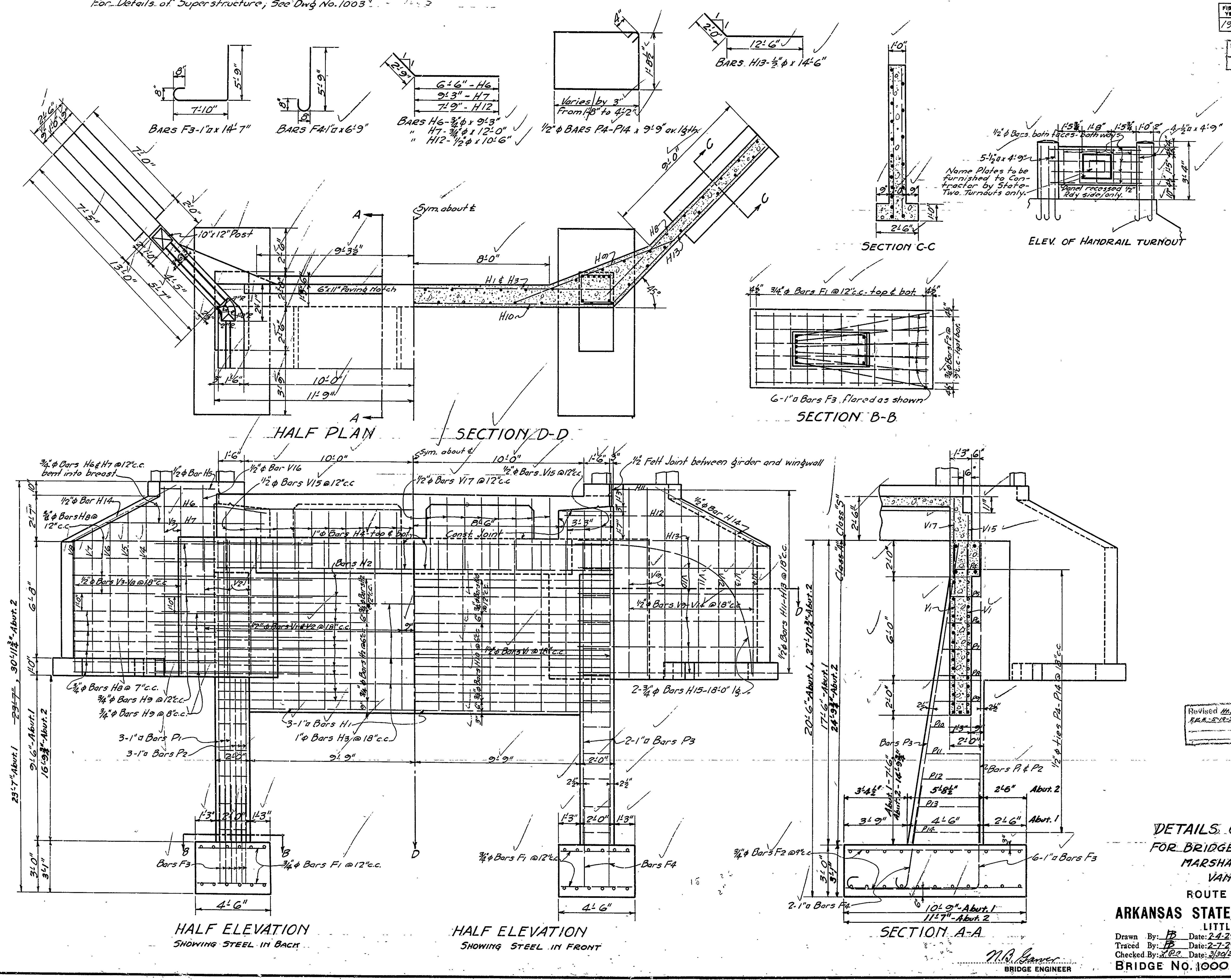
Note: This Drawing included in Job No. 10462
1357, 1358, 1318, 1415 for reference only.

STANDARD 35' R.C. DECK GIRDER
20'-0" ROADWAY
ROUTE SEC.
ARKANSAS STATE HIGHWAY DEPARTMENT
LITTLE ROCK, ARK.
BRIDGE No. 1005
DRAWING No. 1005

For Details of Superstructure, See Dwg No. 1003

FISCAL YEAR	Job No.	SHEET	TOTAL SHEETS
1928	878	7	17

FED. ROAD DIST. NO.	STATE	PROJECT NO.	FISCAL YEAR	SHEET NO.	TOTAL SHEETS
5	ARK.	278-B	1931	84	88



Revised H.S. Col. Base, E.S. for Abut. 2 - R.R. 5-19-32

DETAILS OF ABUTMENTS FOR BRIDGE OVER ARCHY FORK MARSHALL-CLINTON ROAD VAN BUREN CO. ROUTE 65 SEC. 7

ARKANSAS STATE HIGHWAY DEPARTMENT
LITTLE ROCK, ARK.

Drawn By: *FB* Date: 2-4-29
 Traced By: *FB* Date: 2-7-29
 Checked By: *FB* Date: 2/29/29

Scale: 1/8" = 1' ft.

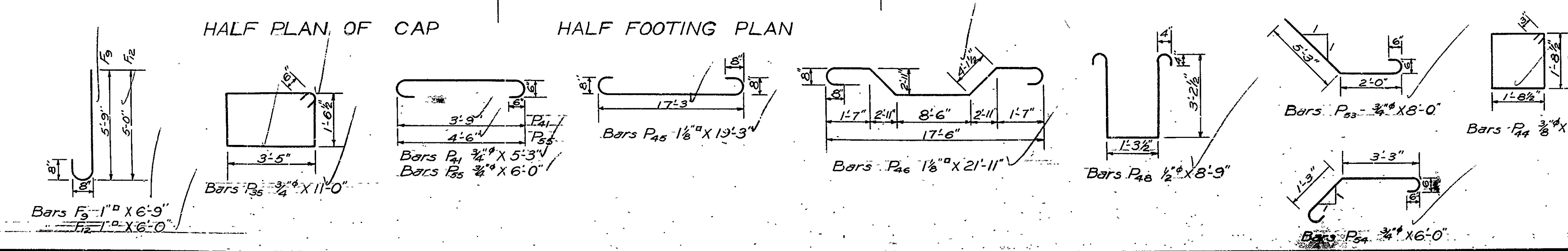
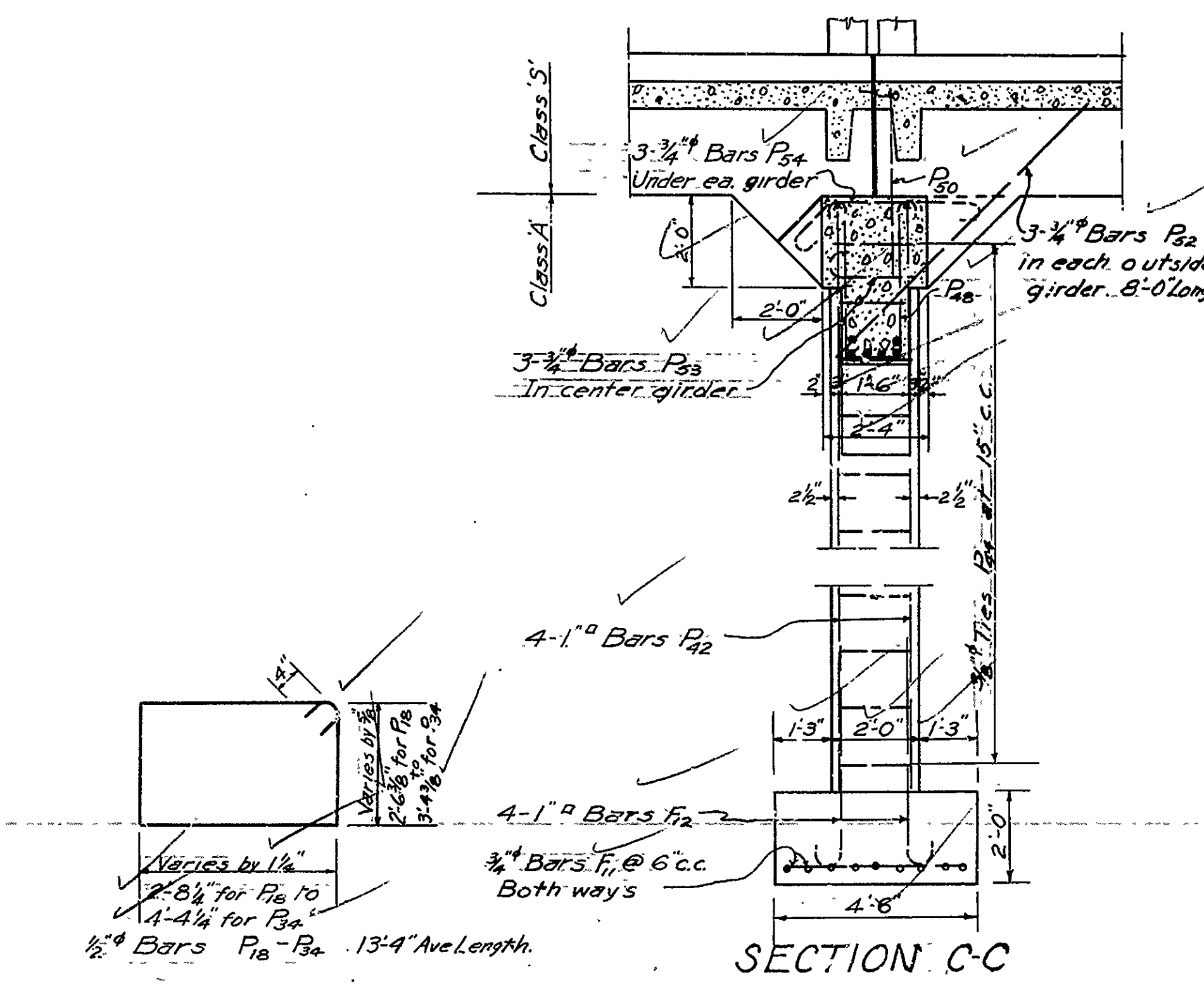
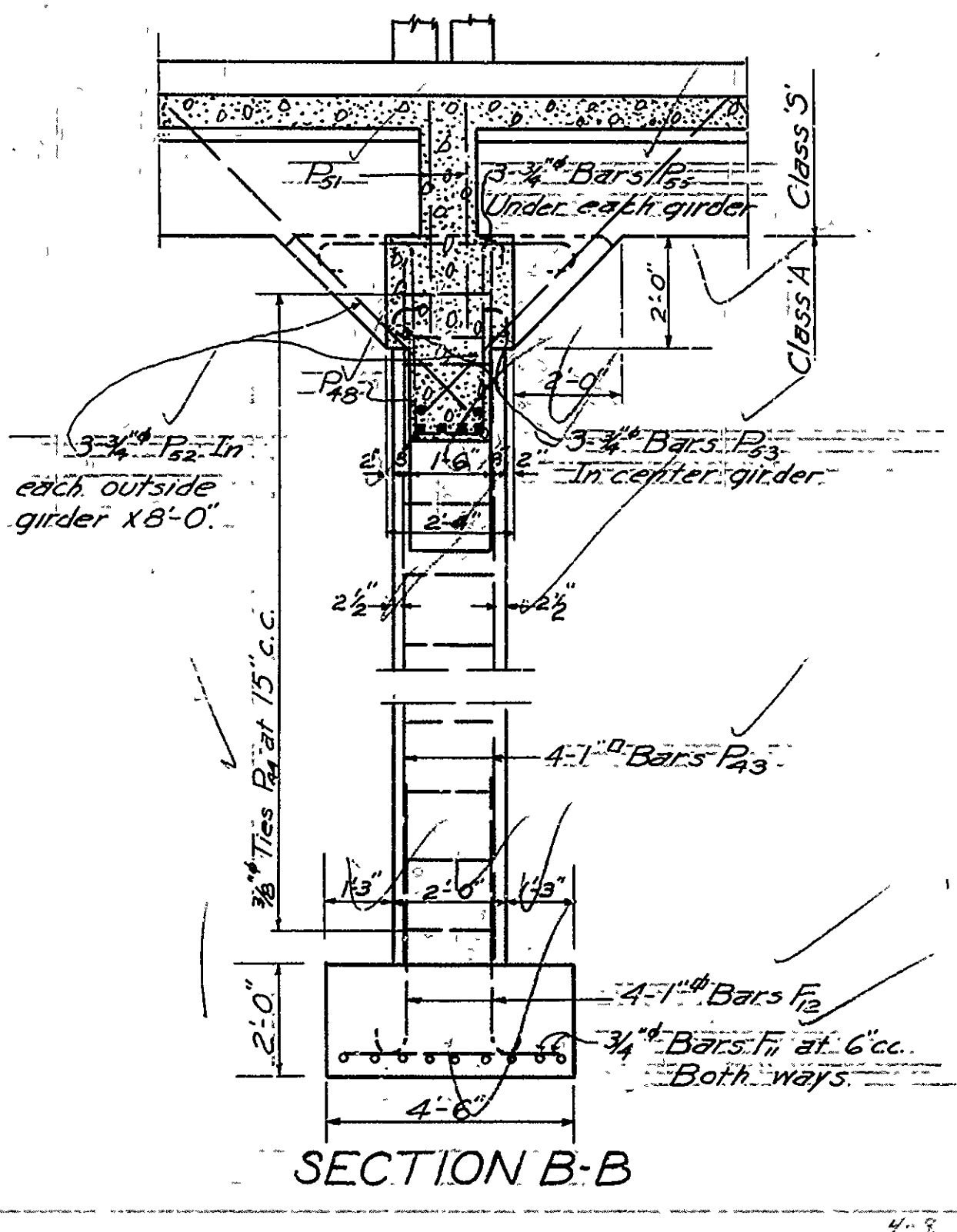
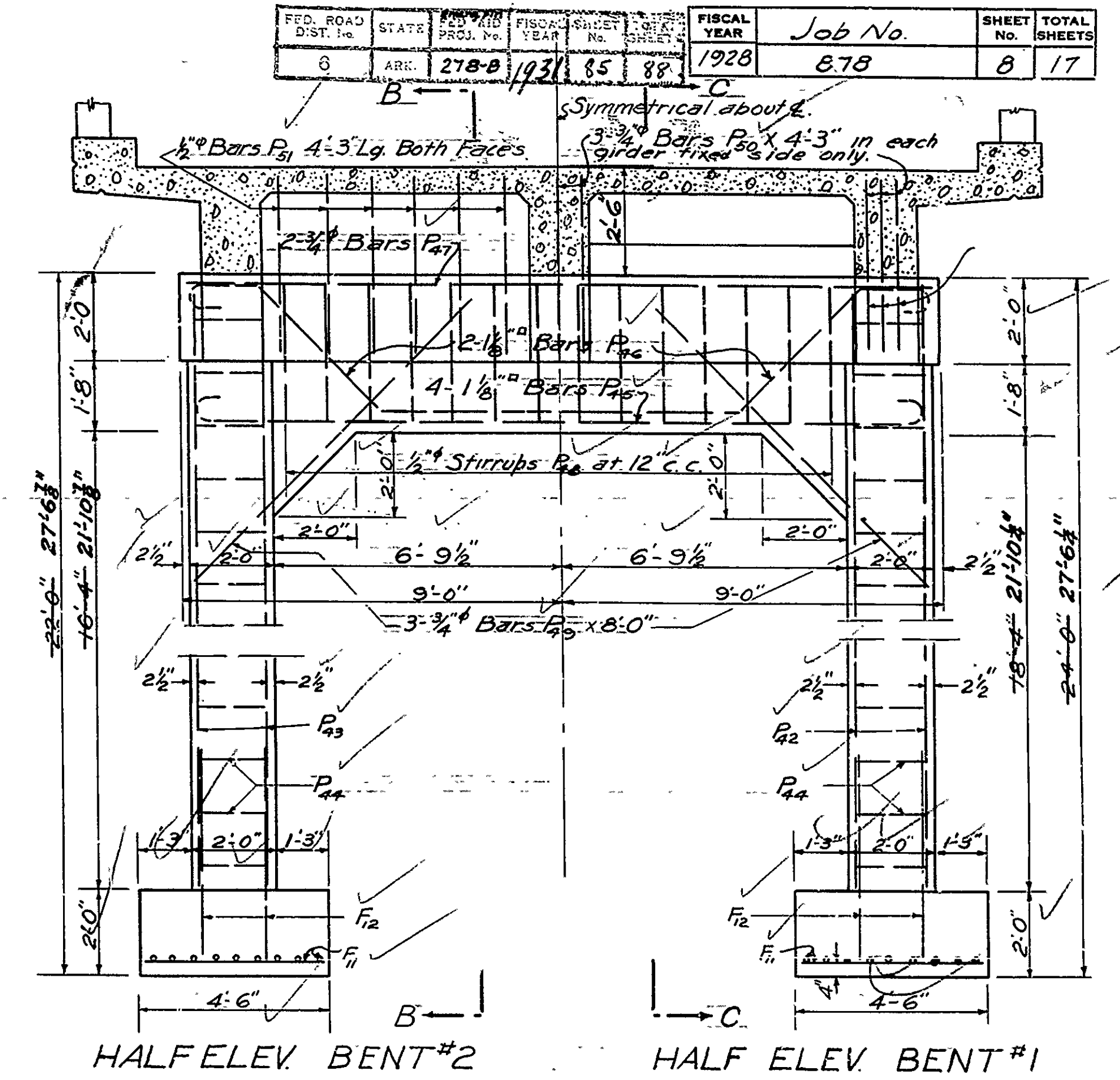
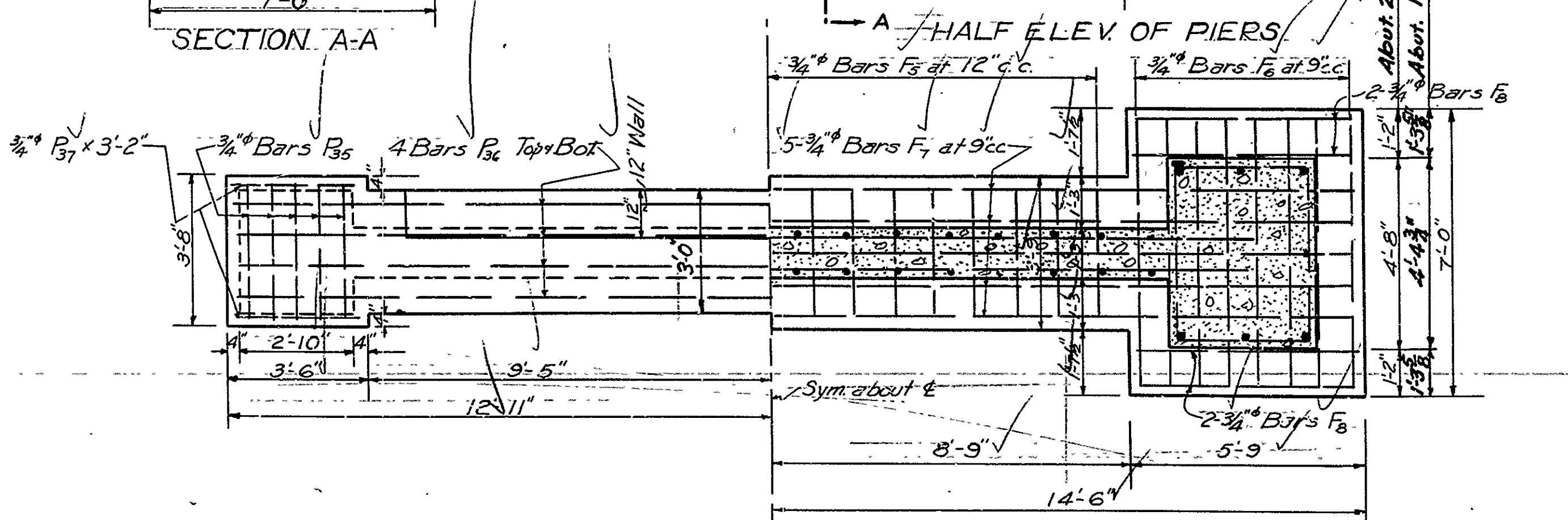
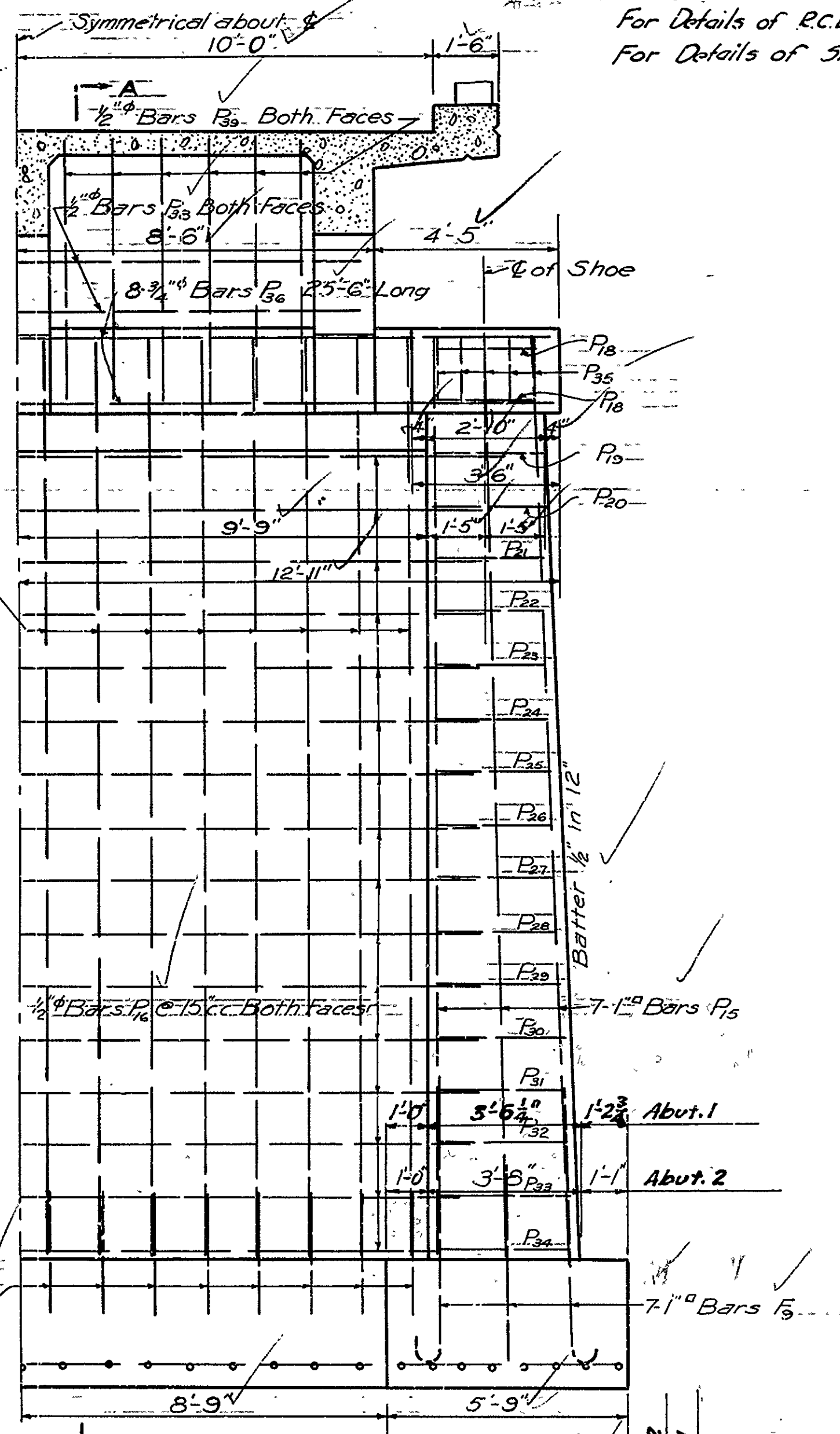
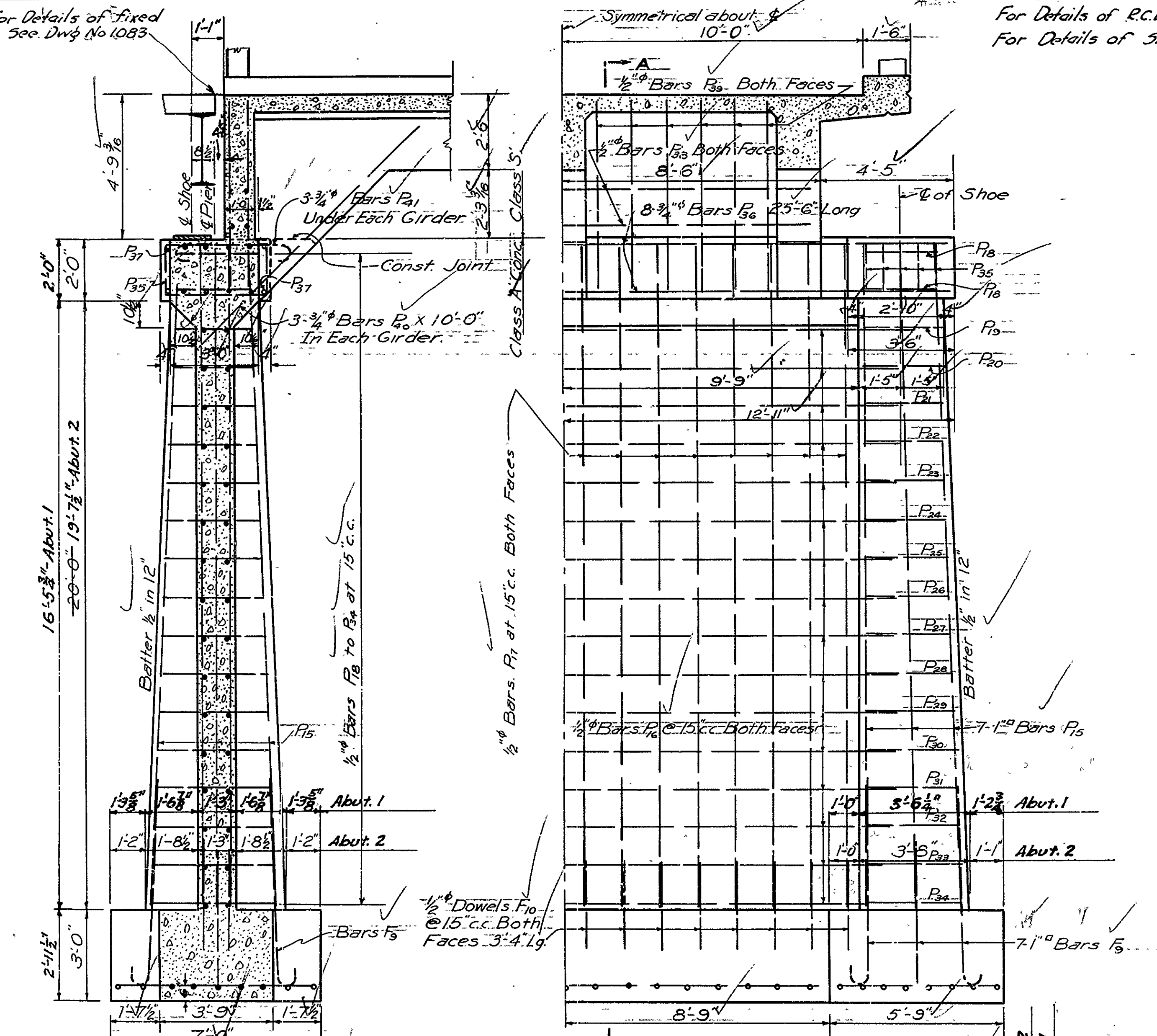
BRIDGE NO. 1000 DRAWING NO. 1382

M.A. Ganser
BRIDGE ENGINEER

For Details of fixed End, See Dwg. No. 1083

For Details of R.C.D. Girder Spans, See Dwg. No. 1003
For Details of Steel Truss Span, See Dwg. No. 1083

FED. ROAD DIST. NO.	STATE	PROJ. NO.	FISCAL YEAR	JOB NO.	SHEET NO.	TOTAL SHEETS
6	ARK.	278-B	1935	678	8	17



Revised Dimensions for 1/4\"/>

DETAILS OF SUBSTRUCTURE
BRIDGE OVER ARCHEY FORK
MARSHALL-CLINTON ROAD
VANBUREN COUNTY
ROUTE 65 SEC. 7

ARKANSAS STATE HIGHWAY DEPARTMENT
LITTLE ROCK, ARK.

Drawn By: H.B. Date: 1-22-35
Traced By: E.O.G. Date: 2-6-35
Checked By: P.R.C. Date: 3-11-35
Scale: 3/8\"/>

M.B. Stewart
BRIDGE ENGINEER

BRIDGE NO. 1000 DRAWING NO. 1383